

Precautions

1. When taking the main unit out of the case or putting it in, pay attention to prevent the protective film from falling off, especially the curved front panel.



2. Hidden fiber storage (Wind the fiber clockwise)



3. Be careful with the fiber connector. Don't pull it very hard.



4. The function of Type-C connector is to restore the system; we have a special key if system break down

5. Indicator on: charging. Indicator off: full. Indicator flashing: charging fault.

Charging time is about 3 hours if the laser is turned off.

Use time: 10 hours if screen stays on. 1.5 hours if 3W output

The battery level will gradually decrease even in the off state

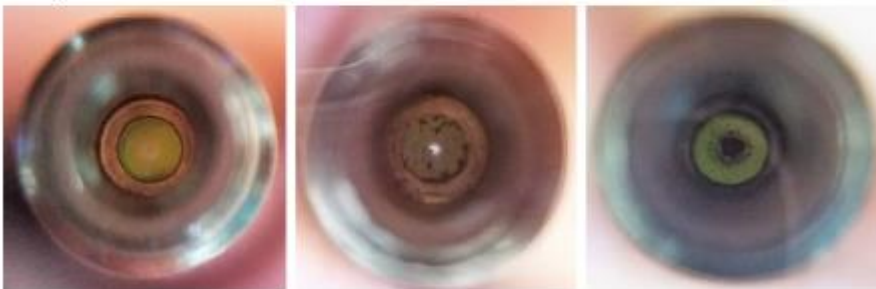


6. Be very careful with the fiber cable, don't bend it to a small angle.

7. Keep handpiece body output window clean. If output power decrease, firstly check if the output window is dirty. If light spot is not very round and clear, clean the output window.

6.4.5. Cleaning Instructions for the optical window of the handpiece body

The optical window of the handpiece body is easily contaminated with dust, resulting in a drop of the laser output. We recommend checking and cleaning the optical window each time before use of the laser.



Good optical window:
Clear and transparent

Contaminated with dust

Damaged

Use the following method for cleaning:

- a) Use compressed air to blow off the dust from the optical window.
- b) If dust remains, use Microbrush to clean the optical window.

Do not rotate the handpiece body when installing the sleeve or other handpiece.

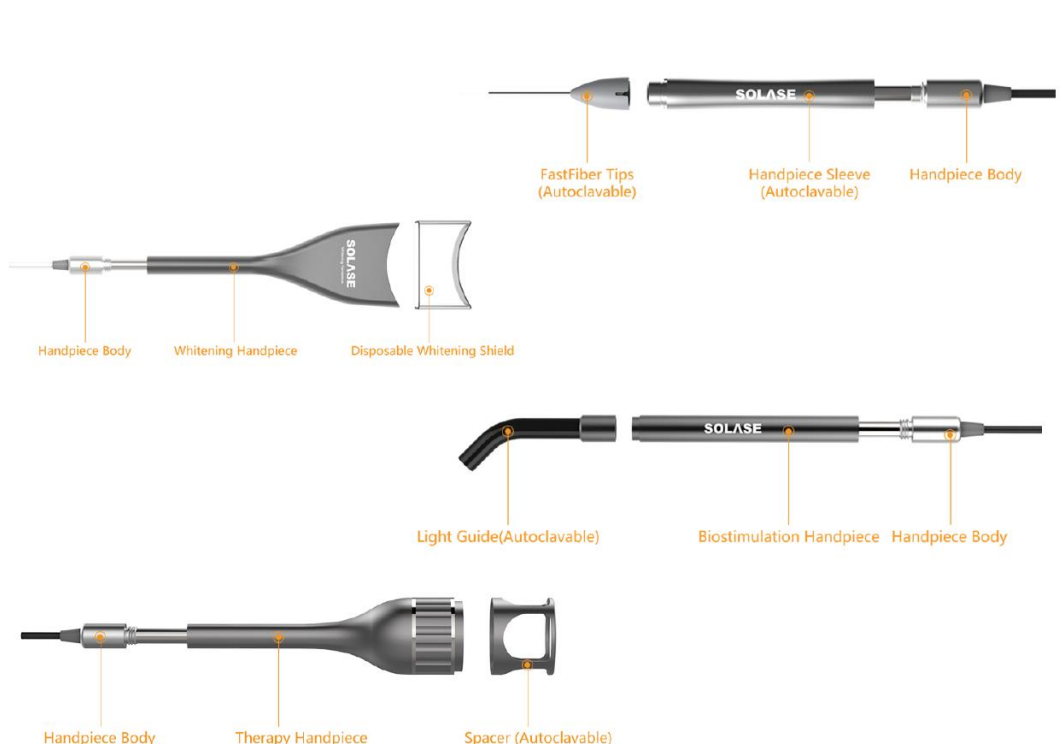
To replace fiber cable, you need to open bottom cover, but this will destroy the warranty label. Don't touch any optical connector surface, or it will directly damage diode chip.

8. The fiber tips must be cleaned and sterilized before use (121°C (250°F) 30 minutes is endurable)

Don't touch tip connector surface.

To install tips, firstly install sleeve. When uninstalling, firstly uninstall tip then sleeve. This to prevent repeatedly rotating the fiber tip in the handpiece body.

9. Don't put the multi-function handpieces in high temperature and high-pressure disinfection. Only parts are autoclavable.



Don't let anything get into the multi-function handpieces from the open ending, keep the cap.

10.If footswitch is offline after you turn on the laser. You can restart the laser. If still offline, please re-pair the Bluetooth connection according to the FOQ answer.

Latest footswitch uses AAA battery. In theory, you can use it for 1 year.

11.If you turn the screen to the brightest, the left screen will be a little hot. It is normal.

12.About warranty, please carefully read user manual.